

# Mercedes Sprinter 316 CDI , Closed Box



Basis	
Type	Van
Aksel	2WD
Stand	Very fine
Engine and transmission	
HP	160
KM	195400
EURO type	6
Manual gear	✔

Registration	
Year	2016
Reg. date	22-12-2016
Last inspection	08-09-2025
Chassis no.	WDB9066331P340272
Ref. no.	70323
Tyres	
% Back	80-80
Dimensions	235/65R16C

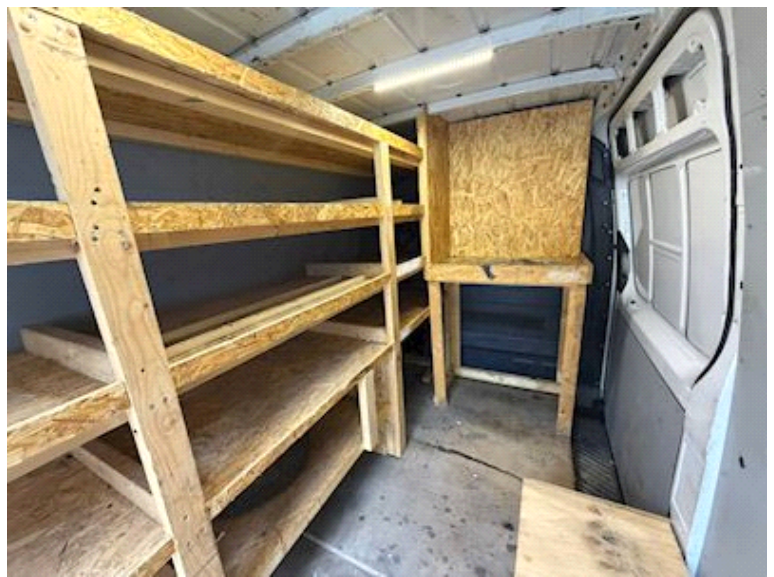
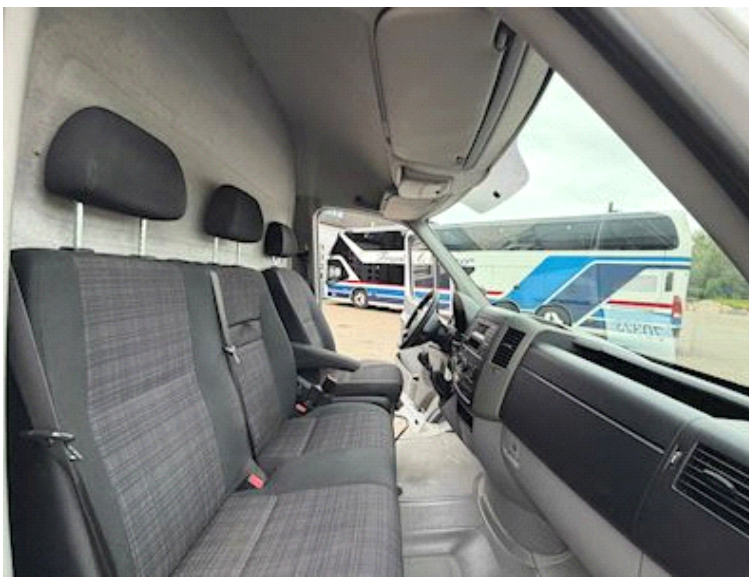
Cab	
Radio / cd	✔
Climate control	✔
Cruise Control	✔
Brakes	
Disk brake	✔
ABS	✔
Weight	
Loading	1176 kg
Total weight	3500 kg
Net weight	2324 kg

Fionia Bank A/S · IBAN DK 4907257648807931 · Bic: FIONDK22  
 Sydbank A/S · IBAN DK 3368450009400021 · Bic: SYBKDK22  
 E-mail: salg@man-fyn.dk

MAN Odense A/S  
 Højmevej 19 · Postboks 202 · DK-5250 Odense SV  
 Telefon: +45 66 17 17 01 · Telefax: +45 66 17 28 50  
 Internet: www.man-fyn.dk



# Mercedes Sprinter 316 CDI , Closed Box



## Seller

Claus Christiansen  
claus@man-fyn.dk  
+4563171234  
+4521619139

Fionia Bank A/S · IBAN DK 4907257648807931 · Bic: FIONDK22  
Sydbank A/S · IBAN DK 3368450009400021 · Bic: SYBKDK22  
E-mail: salg@man-fyn.dk

MAN Odense A/S  
Højmevej 19 · Postboks 202 · DK-5250 Odense SV  
Telefon: +45 66 17 17 01 · Telefax: +45 66 17 28 50  
Internet: www.man-fyn.dk

